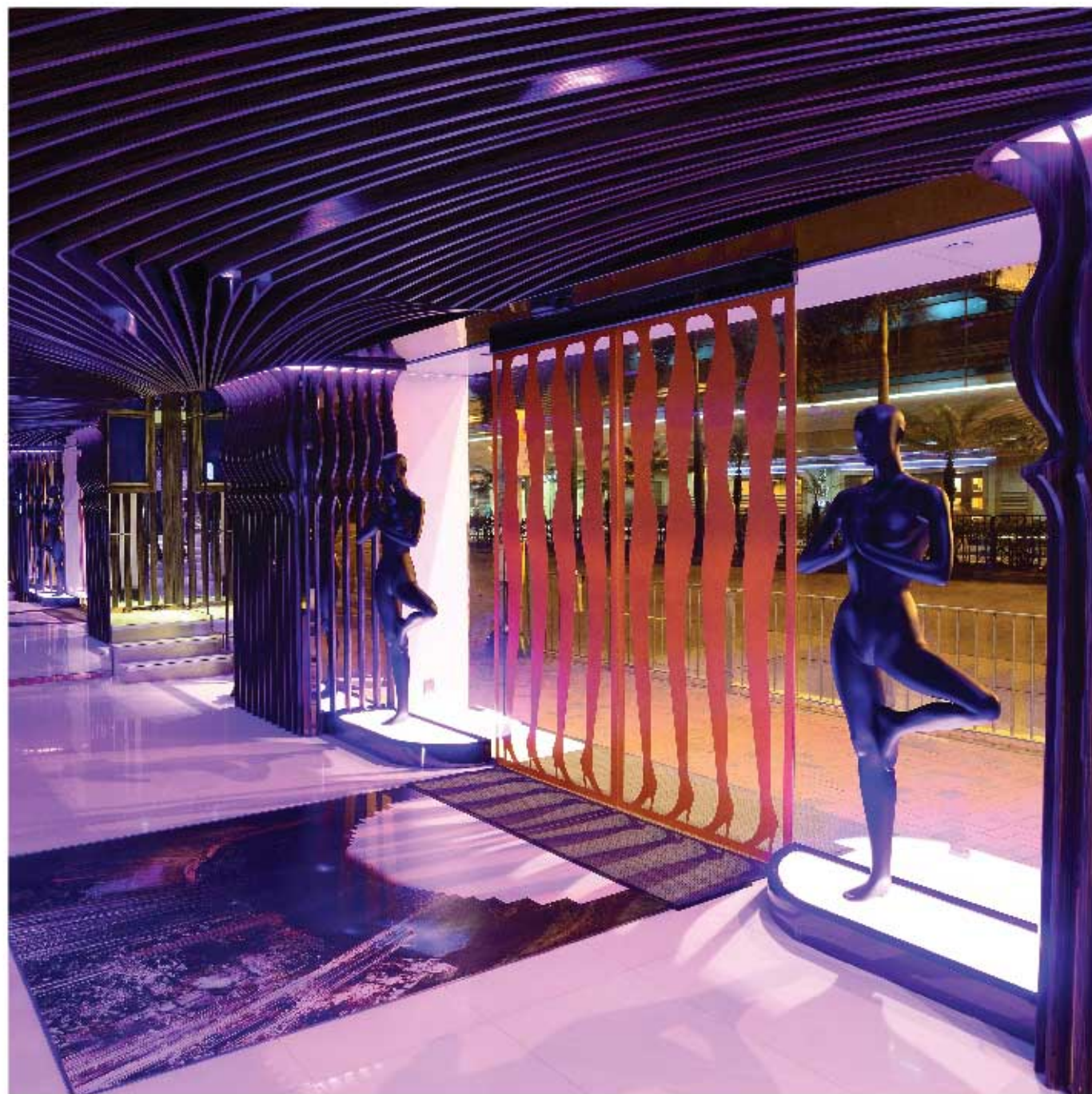




METROPARK HOTEL WANCHAI  
HONG KONG

香港灣仔維景酒店



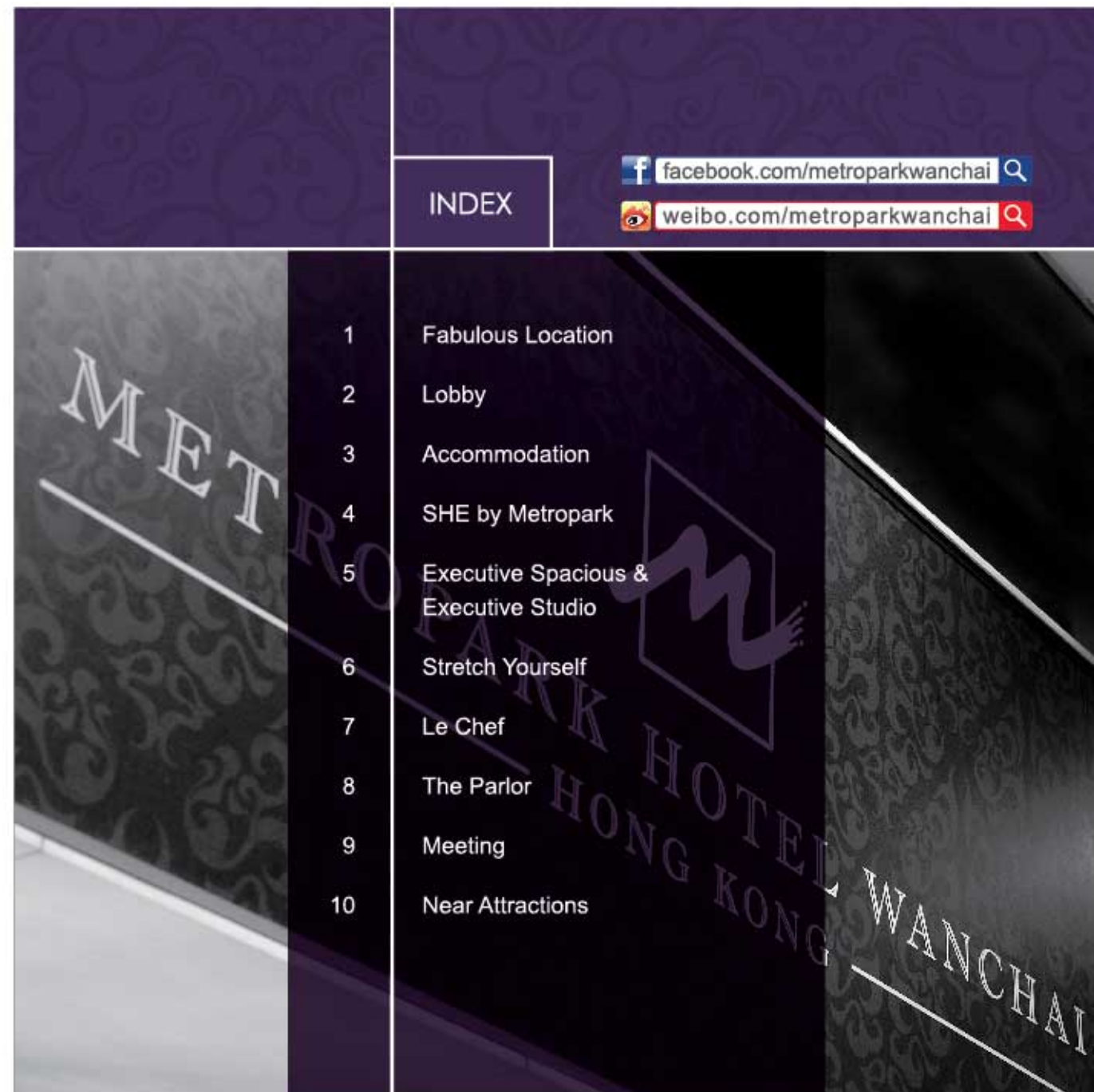


## INDEX

[facebook.com/metroparkwanchai](https://www.facebook.com/metroparkwanchai)

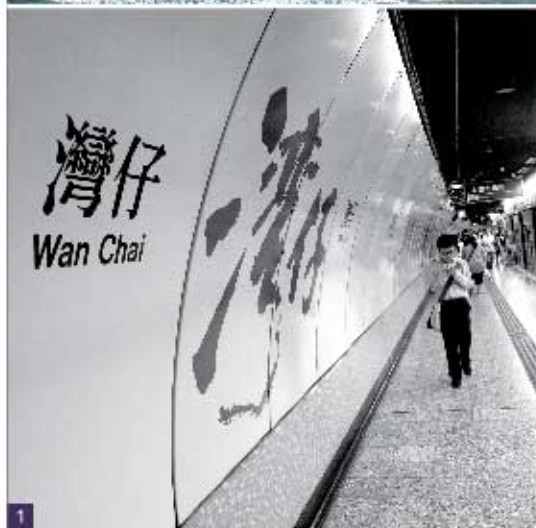
[weibo.com/metroparkwanchai](https://www.weibo.com/metroparkwanchai)

- 1 Fabulous Location
- 2 Lobby
- 3 Accommodation
- 4 SHE by Metropark
- 5 Executive Spacious & Executive Studio
- 6 Stretch Yourself
- 7 Le Chef
- 8 The Parlor
- 9 Meeting
- 10 Near Attractions





An ideal accommodation that is both central and accessible, Metropark Hotel Wanchai Hong Kong is situated in the heart of Hong Kong's luxury commercial, shopping and entertainment district; offering a secure, convenient and upper level of exclusive urban lifestyle for Business and Leisure travelers. In great proximity to the Hong Kong Convention and Exhibition Centre as well as the Mass Transit Railway Station, making it a breeze to get around the city that never sleeps.



FABULOUS  
LOCATION



LOBBY

Refreshing and exquisitely decorated, the lobby offers a gracious ambience for meeting friends and business associates. You will be surly greeted with a prompt and courteous check-in, and our staff would gracefully accommodate any of your needs with our services, ranging from fax, copying, sightseeing tours to postal arrangements.





## ACCOMMODATION



A decent delineation of modern home comforts, where each room showcases contemporary design with clear ambitions for innovations with a sense of vibrancy, making you feel like home during your stay with full equipment of LCD TV, WIFI internet connectivity, electronic safety box and keycard security system.

For Ladies who are looking for a relaxing environment to wind down, visit our 'SHE by Metropark'. Adorned with subtle feminine touches, this entire floor is designed exclusively for ladies only.

Spoil yourself with our welcome amenity set by Borghese, Giardino Collection, a series of botanical skin care product inspired by classic beauty and the nature; and sink in with the harmonic ambience of the floor which also features unique designs in every room to compliment our every guest's lifestyle. A truly sensational experience for our sophisticated and charming ladies.



## SHE BY METROPARK





Our Executive Spacious and Executive Studio offer business travelers an all-in-one experience. The elegantly appointed rooms comprises of modern amenities and comfortable working environment that suits the needs of every business travelers. After a hectic day, a sound sleep can be ensured on the ultra-cozy Queen / King-sized beds that the room offers. To begin a perfect morning, the package comes with additional privileges which include complimentary breakfasts, mini bar, coffee and tea, and more.



EXECUTIVE SPACIOUS  
& EXECUTIVE STUDIO



STRETCH  
YOURSELF

Feel like exercising to burn those calories? Metropark Hotel Wanchai Hong Kong offers you an ultimate work out experience in our gym. Our guests are welcome to use the broad range of equipment from treadmills, elliptical machines to exercise bikes, making it an optimum choice for both business and leisure travelers.





# Le Chef

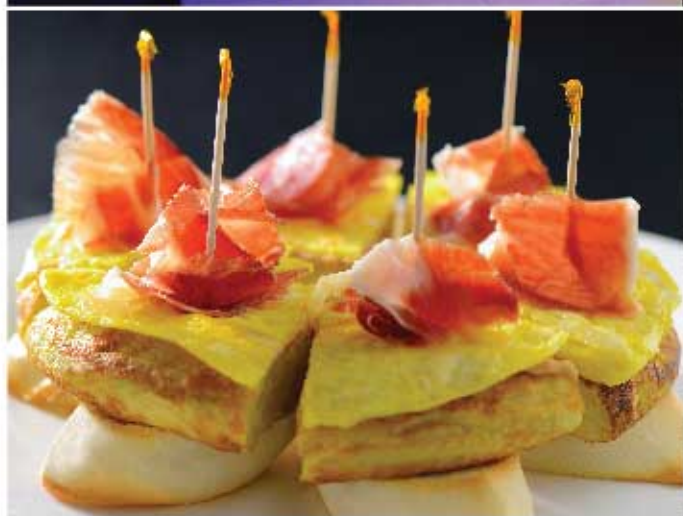
*fusion cuisine*

Feeling the need for a good meal and appreciates food art? We have a place that offers both! Located on the mezzanine floor, **Le Chef** brings you heavenly western dishes and oriental cuisine tailored to everyone's taste. The menu includes authentic and innovative recipes which give our gourmet dishes an extra twist. To top it off, they are gorgeously presented as a piece of Art, enhancing the dining experience for our guests.

HONG KONG  
TATLER  
2014 **BEST**  
RESTAURANTS





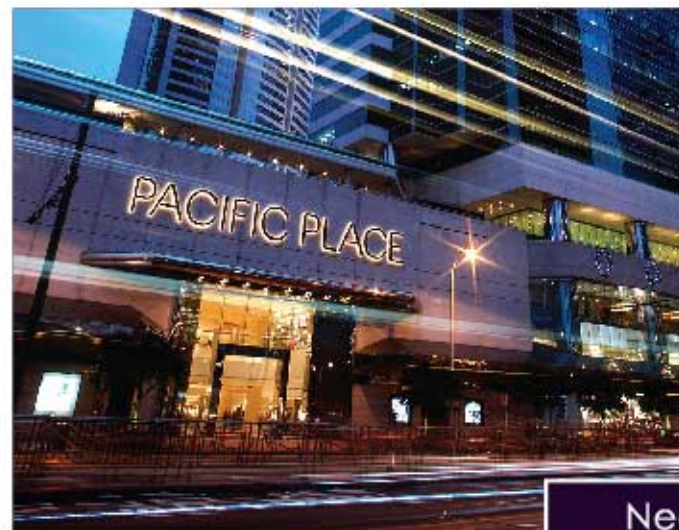


**The Parlor** is located next to the lobby at Metropark Hotel Wanchai Hong Kong. Sleek and stylish with a contemporary edge, it overlook some of the most vibrant and energetic parts of Wanchai, making for the perfect vantage point to watch the city go by. The bar offers an extensive drink list that features fine wines and spirits, as well as a vast array of Spanish pinchos, snacks and signature bite-sized dishes prepared by the hotel's Executive Chef. This cornucopia of snacks and drinks make The Parlor an ideal venue for corporate gatherings and cocktails.



Conveniently situated in the heart of the city's business hubs and well-equipped with our fully integrated audio-visual technology & professional technical support, Metropark Hotel Wanchai Hong Kong provides you the best venue for corporate meetings.

## MEETING



## Nearby Attractions



- 0:05 📍 Pacific Place - a mega mall which carries all luxurious brands
- 0:05 📍 Wanchai Waterfront Promenade - Taste of the Pearl of the East along the glamorous Victoria Harbour
- 0:10 📍 Golden Bauhinia Square - Memorial for the establishment of HKSAR
- 0:20 🚡 The Peak - Aerial view of the brightly lit city from the mountain top
- 0:20 🚡 Ocean Park - Bring home an unforgettable experience in the world's famous Ocean Theme Park





41-49 Hennessy Road, Wanchai, Hong Kong

Tel: (852) 2861 1166 Fax: (852) 2865 6111

Reservation Hotline: (852) 2863 7399

Email: [rsvn.hkwh@metroparkhotels.com](mailto:rsvn.hkwh@metroparkhotels.com)

Online booking / website: [www.metroparkhotelwanchai.com](http://www.metroparkhotelwanchai.com)

Mobile website: [www.metroparkwanchai.com](http://www.metroparkwanchai.com)

MEMBER OF



HOTELS &  
PREFERENCE



港中旅酒店有限公司  
HK CTS Hotels Co., Ltd.